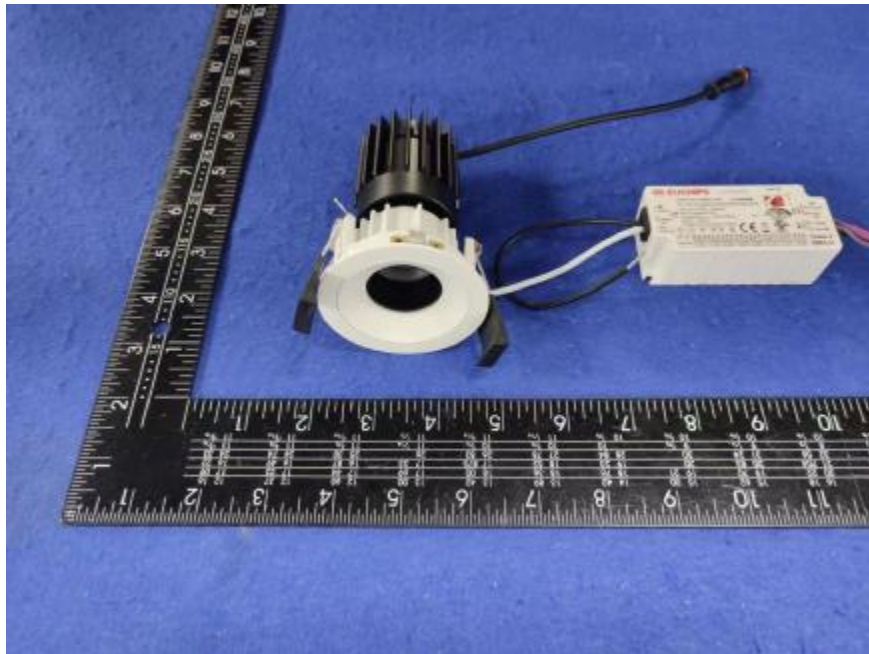


Luminaire Photograph



Light Output Ratio:	48.4%	
Luminaire Power:	12.08 W	
SHR Nominal:	0.00	Calculated using the TM5
SHR Maximum:	0.30	fine grid method.

C Range: 0 - 360DEG
C Interval: 30.0DEG
Test Speed: HIGH
Temperature: 25.3 °C
Operators: zoe
Test Date: 2023-12-7

Range: 0 - 180DEG
Interval: 1.0DEG
Test System: EVERFINE GO-SPEX500_V1 SYSTEM V2.00.461
Humidity: 65.0%
Test Distance: 3.160m [K=1.0000]
Remarks: LAMP: CMA1306-0000-000N0U0A30G Ra:90
LENS: PM-1084 15R
DRIVER: PUP10A-1WMC-350 260mA
30minutes warm-up

LUMINOUS INTENSITY DISTRIBUTION DIAGRAM

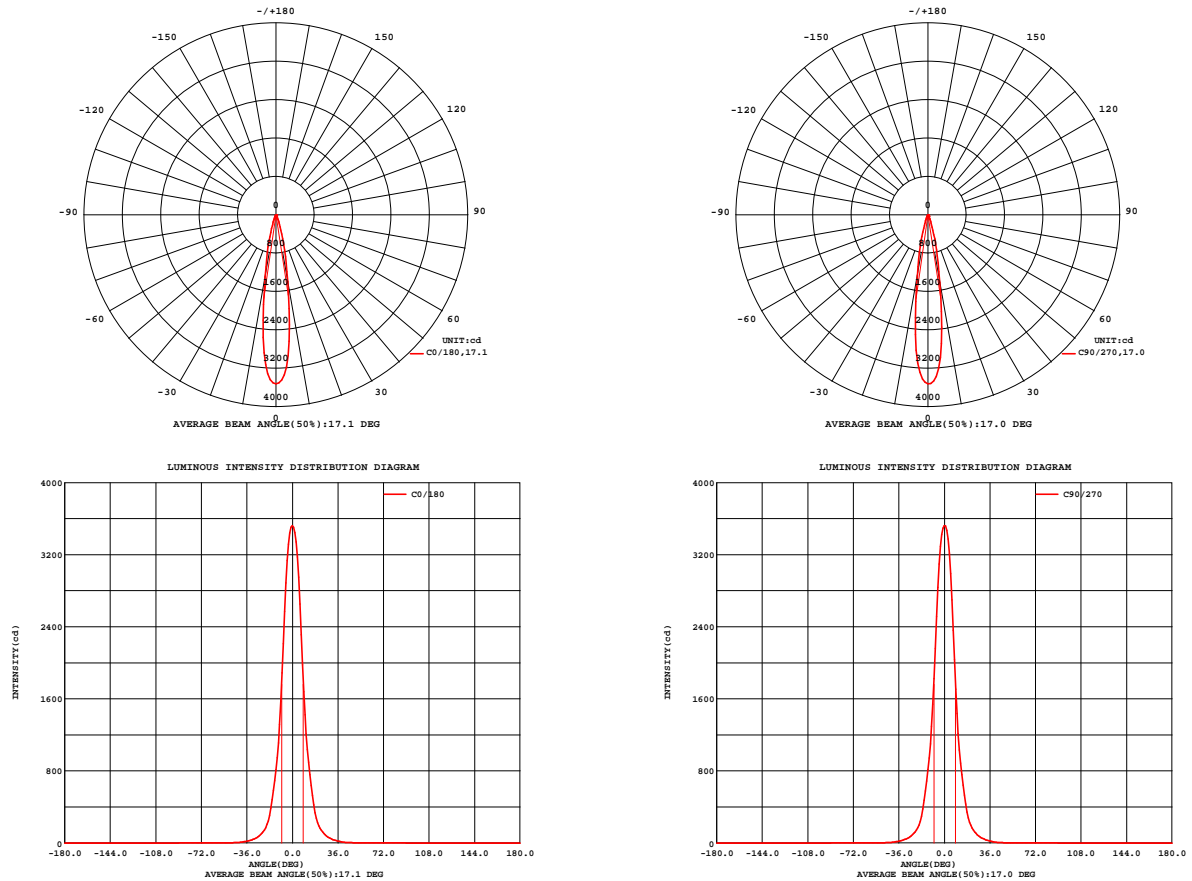


Fig. C0/C180

Fig. C90/C270

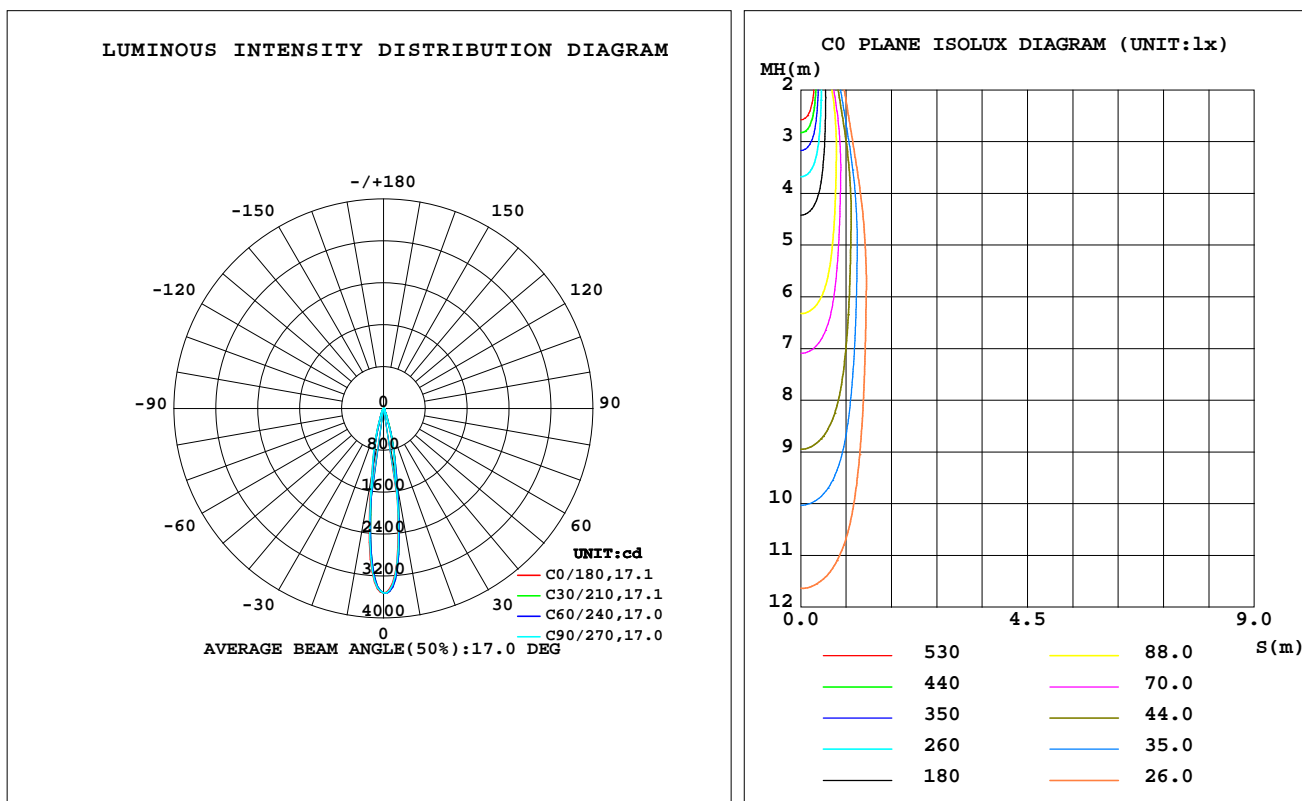
C Range: 0 - 360DEG
C Interval: 30.0DEG
Test Speed: HIGH
Temperature: 25.3 °C
Operators: zoe
Test Date: 2023-12-7

Range: 0 - 180DEG
Interval: 1.0DEG
Test System: EVERFINE GO-SPEX500_V1 SYSTEM V2.00.461
Humidity: 65.0%
Test Distance: 3.160m [K=1.0000]
Remarks: LAMP: CMA1306-0000-000N0U0A30G Ra: 90
LENS: PM-1084 15R
DRIVER: PUP10A-1WMC-350 260mA
30minutes warm-up

LUMINAIRE PHOTOMETRIC TEST REPORT

Test:U:120.17V I:0.1014A P:12.081W PF:0.9895 Freq:59.98Hz Lamp Flux:959.178x1 lm		
NAME: 2318.116-LEA-13	TYPE:	WEIGHT:
SPEC.: 3000K	DIM.:	SERIAL No.: 2312071428
MFR.: RISE	SUR.: 0.00180864m2	Shielding Angle:

DATA OF LAMP		PHOTOMETRIC DATA Eff: 38.45 lm/W			
MODEL	CREE	I _{max} (cd)	3528	S/MH(C0/180)	0.29
NOMINAL POWER(W)	12	LOR(%)	48.4	S/MH(C90/270)	0.28
RATED VOLTAGE(V)	120	TOTAL FLUX(lm)	464.47	UP,DN(C0-180)	0.0,24.9
NOMINAL FLUX(lm)	959.178	CIE CLASS	DIRECT	UP,DN(C180-360)	0.0,23.6
LAMPS INSIDE	1	up(%)	0.0	CIBSE SHR NOM	0.00
TEST VOLTAGE(V)	120	down(%)	48.4	CIBSE SHR MAX	0.30



ZONAL FLUX DIAGRAM

ZONAL FLUX DIAGRAM:

	C0	C45	C90	C135	C180	C225	C270	C315		zone	total	%lum,lamp
10	1421	1529	1437	1280	1316	1218	1296	1471	0- 10	222.6	222.6	47.9,23.2
20	226.9	249.9	229.5	200.5	206.8	185.8	198.7	234.1	10- 20	171.0	393.6	84.8,41
30	51.13	56.74	52.73	46.36	46.10	43.26	45.99	51.26	20- 30	48.84	442.5	95.3,46.1
40	9.759	11.04	10.31	9.367	9.677	9.143	9.858	10.85	30- 40	16.08	458.6	98.7,47.8
50	2.922	2.951	2.810	2.779	2.804	2.726	2.742	2.957	40- 50	3.711	462.3	99.5,48.2
60	0.7718	0.8229	0.8001	0.8180	0.8573	0.8213	0.8099	0.8006	50- 60	1.625	463.9	99.9,48.4
70	0.1851	0.1964	0.1995	0.2008	0.2333	0.2189	0.2035	0.1938	60- 70	0.4656	464.4	100,48.4
80	0.0363	0.0270	0.0285	0.0231	0.0314	0.0228	0.0285	0.0226	70- 80	0.0865	464.5	100,48.4
90	0	0	0	0	0	0	0	0	80- 90	0.0164	464.5	100,48.4
100	0	0	0	0	0	0	0	0	90-100	0	464.5	100,48.4
110	0	0	0	0	0	0	0	0	100-110	0	464.5	100,48.4
120	0	0	0	0	0	0	0	0	110-120	0	464.5	100,48.4
130	0	0	0	0	0	0	0	0	120-130	0	464.5	100,48.4
140	0	0	0	0	0	0	0	0	130-140	0	464.5	100,48.4
150	0	0	0	0	0	0	0	0	140-150	0	464.5	100,48.4
160	0	0	0	0	0	0	0	0	150-160	0	464.5	100,48.4
170	0	0	0	0	0	0	0	0	160-170	0	464.5	100,48.4
180	0	0	0	0	0	0	0	0	170-180	0	464.5	100,48.4
DEG	LUMINOUS INTENSITY:cd									UNIT:lm		

C Range: 0 - 360DEG
C Interval: 30.0DEG
Test Speed: HIGH
Temperature:25.3℃
Operators:zoe
Test Date:2023-12-7

Range: 0 - 180DEG
Interval: 1.0DEG
Test System:EVERFINE GO-SPEX500_V1 SYSTEM V2.00.461
Humidity:65.0%
Test Distance:3.160m [K=1.0000]
Remarks: LAMP:CMA1306-0000-000N0U0A30G Ra:90
LENS:PM-1084 15R
DRIVER:PUP10A-1WMC-350 260mA
30minutes warm-up

LUMINANCE LIMITATION CURVES

Test:U:120.17V I:0.1014A P:12.081W PF:0.9895 Freq:59.98Hz
Lamp Flux:959.178x1 lm

NAME: 2318.116-LEA-13

TYPE:

WEIGHT:

SPEC.: 3000K

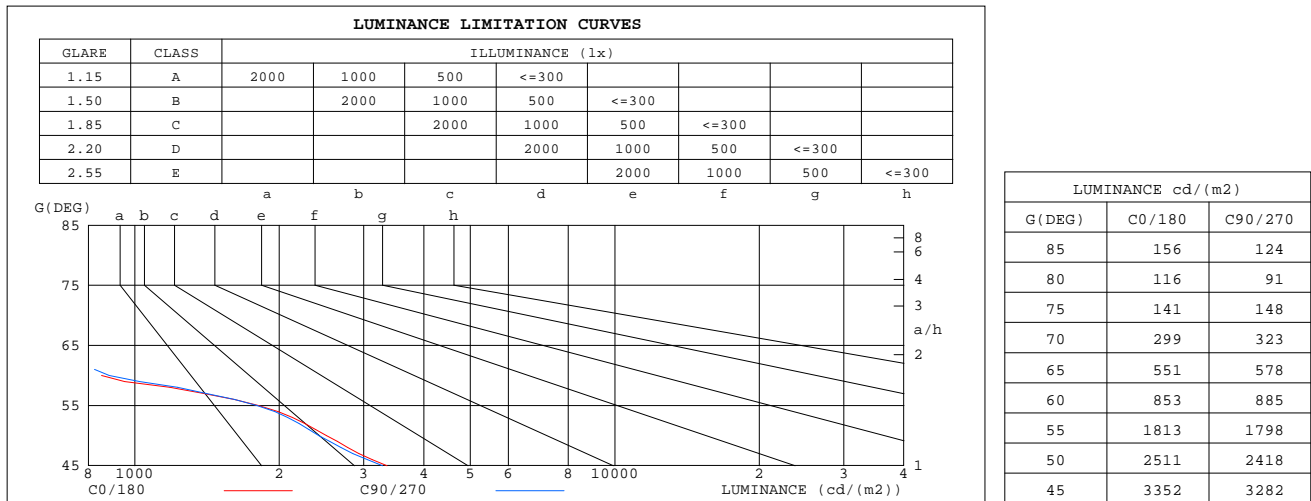
DIM.:

SERIAL No.: 2312071428

MFR.: RISE

SUR.: 0.00180864m2

Shielding Angle:



C Range: 0 - 360DEG
C Interval: 30.0DEG
Test Speed: HIGH
Temperature:25.3℃
Operators:zoe
Test Date:2023-12-7

Range: 0 - 180DEG
Interval: 1.0DEG
Test System:EVERFINE GO-SPEX500_V1 SYSTEM V2.00.461
Humidity:65.0%
Test Distance:3.160m [K=1.0000]
Remarks: LAMP:CMA1306-0000-000N0U0A30G Ra:90
LENS:PM-1084 15R
DRIVER:PUP10A-1WMC-350 260mA
30minutes warm-up

CU AND LUMINAIRE BUDGETARY ESTIMATE DIAGRAM

Test:U:120.17V I:0.1014A P:12.081W PF:0.9895 Freq:59.98Hz
Lamp Flux:959.178x1 lm

NAME: 2318.116-LEA-13

TYPE:

WEIGHT:

SPEC.: 3000K

DIM.:

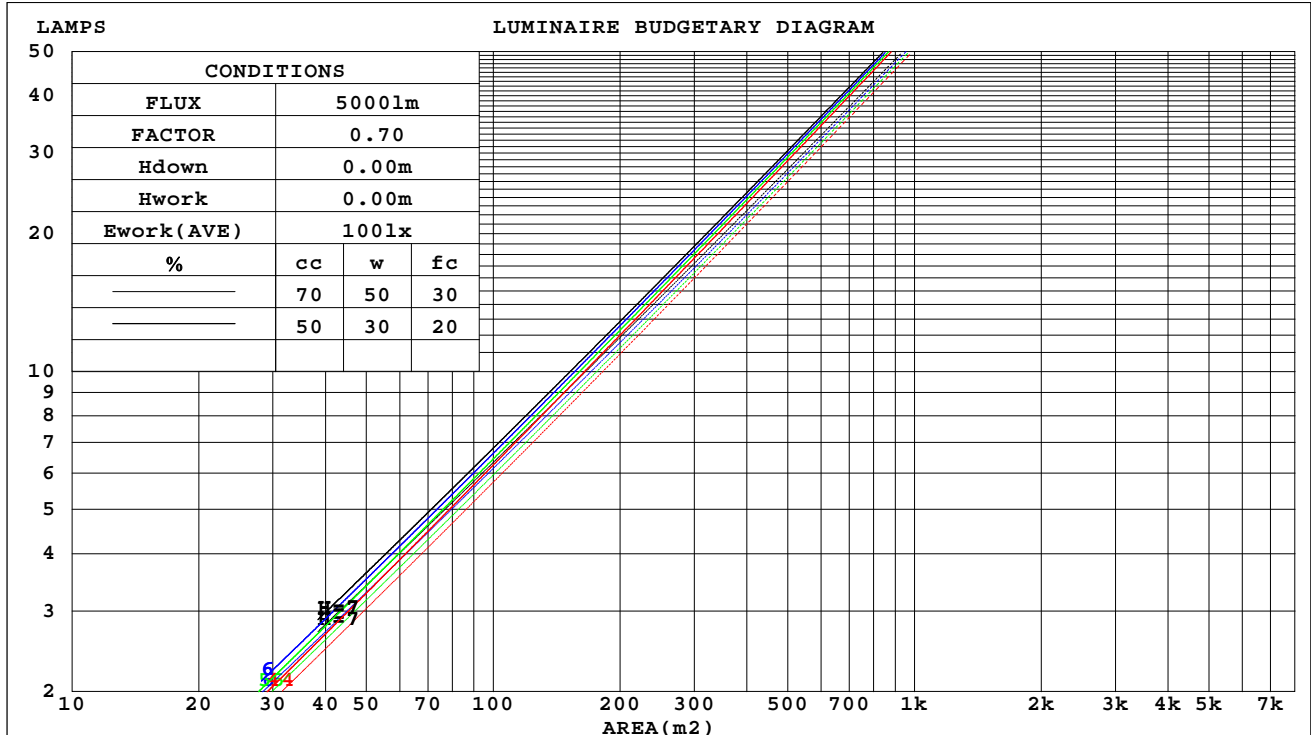
SERIAL No.: 2312071428

MFR.: RISE

SUR.: 0.00180864m2

Shielding Angle:

cc	80%			70%			50%			30%			10%			0
w	50%	30%	10%	50%	30%	10%	50%	30%	10%	50%	30%	10%	50%	30%	10%	0
fc	20%			20%			20%			20%			20%			0
RCR	RCR:Room Cavity Ratio															



C Range: 0 - 360DEG
C Interval: 30.0DEG
Test Speed: HIGH
Temperature:25.3℃
Operators:zoe
Test Date:2023-12-7

Range: 0 - 180DEG
Interval: 1.0DEG
Test System:EVERFINE GO-SPEX500_V1 SYSTEM V2.00.461
Humidity:65.0%
Test Distance:3.160m [K=1.0000]
Remarks: LAMP:CMA1306-0000-000N0U0A30G Ra:90
LENS:PM-1084 15R
DRIVER:PUP10A-1WMC-350 260mA
30minutes warm-up

WEC AND CCEC

Test:U:120.17V I:0.1014A P:12.081W PF:0.9895 Freq:59.98Hz Lamp Flux:959.178x1 lm		
NAME: 2318.116-LEA-13	TYPE:	WEIGHT:
SPEC.: 3000K	DIM.:	SERIAL No.: 2312071428
MFR.: RISE	SUR.: 0.00180864m2	Shielding Angle:

cc	80%			70%			50%			30%			10%			0
w	50%	30%	10%	50%	30%	10%	50%	30%	10%	50%	30%	10%	50%	30%	10%	0
fc	20%			20%			20%			20%			20%			0
RCR	RCR:Room Cavity Ratio Wall Exitance Coefficients(WEC)															
0.0																
1.0	.062	.035	.011	.059	.034	.011	.053	.030	.010	.047	.027	.009	.042	.024	.008	
2.0	.057	.031	.010	.054	.030	.009	.050	.028	.009	.045	.025	.008	.041	.023	.007	
3.0	.053	.028	.008	.051	.027	.008	.047	.025	.008	.043	.023	.007	.039	.022	.007	
4.0	.049	.026	.008	.047	.025	.007	.044	.023	.007	.041	.022	.007	.038	.021	.006	
5.0	.046	.024	.007	.045	.023	.007	.042	.022	.006	.039	.021	.006	.037	.020	.006	
6.0	.043	.022	.006	.042	.021	.006	.040	.020	.006	.037	.019	.006	.035	.019	.006	
7.0	.041	.020	.006	.040	.020	.006	.038	.019	.006	.036	.018	.005	.034	.018	.005	
8.0	.039	.019	.005	.038	.019	.005	.036	.018	.005	.034	.017	.005	.033	.017	.005	
9.0	.037	.018	.005	.036	.018	.005	.035	.017	.005	.033	.017	.005	.032	.016	.005	
10.0	.035	.017	.005	.035	.017	.005	.033	.016	.005	.032	.016	.005	.031	.015	.004	

cc	80%			70%			50%			30%			10%			0
w	50%	30%	10%	50%	30%	10%	50%	30%	10%	50%	30%	10%	50%	30%	10%	0
fc	20%			20%			20%			20%			20%			0
RCR	RCR:Room Cavity Ratio Ceiling Cavity Exitance Coefficients(CCEC)															
0.0	.092	.092	.092	.079	.079	.079	.054	.054	.054	.031	.031	.031	.010	.010	.010	
1.0	.081	.076	.072	.069	.066	.062	.048	.045	.043	.027	.026	.025	.009	.008	.008	
2.0	.072	.064	.058	.062	.055	.050	.042	.038	.035	.024	.022	.020	.008	.007	.007	
3.0	.065	.055	.047	.055	.047	.041	.038	.033	.029	.022	.019	.017	.007	.006	.006	
4.0	.058	.047	.039	.050	.041	.034	.034	.028	.024	.020	.017	.014	.006	.005	.005	
5.0	.053	.041	.033	.046	.036	.028	.031	.025	.020	.018	.015	.012	.006	.005	.004	
6.0	.049	.036	.028	.042	.031	.024	.029	.022	.017	.017	.013	.010	.005	.004	.003	
7.0	.045	.032	.024	.038	.028	.021	.027	.020	.015	.015	.012	.009	.005	.004	.003	
8.0	.041	.029	.020	.036	.025	.018	.025	.018	.013	.014	.010	.008	.005	.003	.002	
9.0	.039	.026	.018	.033	.023	.015	.023	.016	.011	.013	.009	.007	.004	.003	.002	
10.0	.036	.024	.016	.031	.021	.014	.022	.015	.010	.013	.009	.006	.004	.003	.002	

C Range: 0 - 360DEG
C Interval: 30.0DEG
Test Speed: HIGH
Temperature:25.3℃
Operators:zoe
Test Date:2023-12-7

Range: 0 - 180DEG
Interval: 1.0DEG
Test System:EVERFINE GO-SPEX500_V1 SYSTEM V2.00.461
Humidity:65.0%
Test Distance:3.160m [K=1.0000]
Remarks: LAMP:CMA1306-0000-000N0U0A30G Ra:90
LENS:PM-1084 15R
DRIVER:PUP10A-1WMC-350 260mA
30minutes warm-up

UGR(Unified Glare Rating) Table

Test:U:120.17V I:0.1014A P:12.081W PF:0.9895 Freq:59.98Hz Lamp Flux:959.178x1 lm										
NAME: 2318.116-LEA-13					TYPE:			WEIGHT:		
SPEC.: 3000K					DIM.:			SERIAL No.: 2312071428		
MFR.: RISE					SUR.: 0.00180864m2			Shielding Angle:		
ceiling/cavity	0.7	0.7	0.5	0.5	0.3	0.7	0.7	0.5	0.5	0.3
walls	0.5	0.3	0.5	0.3	0.3	0.5	0.3	0.5	0.3	0.3
working plane	0.2	0.2	0.2	0.2	0.2	0.2	0.2	0.2	0.2	0.2
Room dimensions	Viewed crosswise					Viewed endwise				
x = 2H y = 2H	8.0	8.6	8.2	8.8	8.9	8.1	8.7	8.3	8.8	9.0
3H	7.9	8.5	8.2	8.7	8.8	8.0	8.5	8.2	8.7	8.9
4H	7.8	8.4	8.1	8.6	8.8	7.9	8.5	8.2	8.7	8.9
6H	7.8	8.3	8.0	8.5	8.7	7.8	8.3	8.1	8.6	8.8
8H	7.7	8.2	8.0	8.4	8.7	7.8	8.3	8.1	8.5	8.8
12H	7.7	8.1	8.0	8.4	8.7	7.8	8.2	8.1	8.5	8.7
4H 2H	7.9	8.4	8.1	8.6	8.8	7.9	8.5	8.2	8.7	8.9
3H	7.7	8.2	8.0	8.4	8.7	7.8	8.3	8.1	8.5	8.8
4H	7.6	8.1	8.0	8.3	8.6	7.7	8.1	8.0	8.4	8.7
6H	7.5	7.9	7.9	8.2	8.6	7.6	8.0	8.0	8.3	8.7
8H	7.5	7.8	7.9	8.2	8.5	7.6	7.9	7.9	8.3	8.6
12H	7.4	7.7	7.8	8.1	8.5	7.5	7.8	7.9	8.2	8.6
8H 4H	7.5	7.8	7.9	8.2	8.5	7.6	7.9	7.9	8.3	8.6
6H	7.4	7.7	7.8	8.0	8.5	7.4	7.7	7.9	8.1	8.5
8H	7.3	7.6	7.7	8.0	8.4	7.4	7.6	7.8	8.1	8.5
12H	7.2	7.5	7.7	7.9	8.4	7.3	7.5	7.8	8.0	8.4
12H 4H	7.4	7.7	7.8	8.1	8.5	7.5	7.8	7.9	8.2	8.6
6H	7.3	7.6	7.7	8.0	8.4	7.4	7.6	7.8	8.1	8.5
8H	7.2	7.5	7.7	7.9	8.4	7.3	7.5	7.8	8.0	8.4
Variations with the observer position at spacings(CIE Pub.117):										
S = 1.0H	+ 3.3 / - 6.9					+ 3.5 / - 7.1				
1.5H	+ 5.1 / - 3.8					+ 5.5 / - 4.1				
2.0H	+ 3.3 / - 5.3					+ 3.2 / - 5.2				

CIE Pub.117, 959.2 lm Total Lamp Luminous Flux Correct (8log(F/F0) = -0.1)
Area: 0.00180864 m2

C Range: 0 - 360DEG
C Interval: 30.0DEG
Test Speed: HIGH
Temperature:25.3℃
Operators:zoe
Test Date:2023-12-7

Range: 0 - 180DEG
Interval: 1.0DEG
Test System:EVERFINE GO-SPEX500_V1 SYSTEM V2.00.461
Humidity:65.0%
Test Distance:3.160m [K=1.0000]
Remarks: LAMP:CMA1306-0000-000N0U0A30G Ra:90
LENS:PM-1084 15R
DRIVER:PUP10A-1WMC-350 260mA
30minutes warm-up

UTILIZATION FACTORS TABLE

Test:U:120.17V I:0.1014A P:12.081W PF:0.9895 Freq:59.98Hz Lamp Flux:959.178x1 lm		
NAME: 2318.116-LEA-13	TYPE:	WEIGHT:
SPEC.: 3000K	DIM.:	SERIAL No.: 2312071428
MFR.: RISE	SUR.: 0.00180864m2	Shielding Angle:

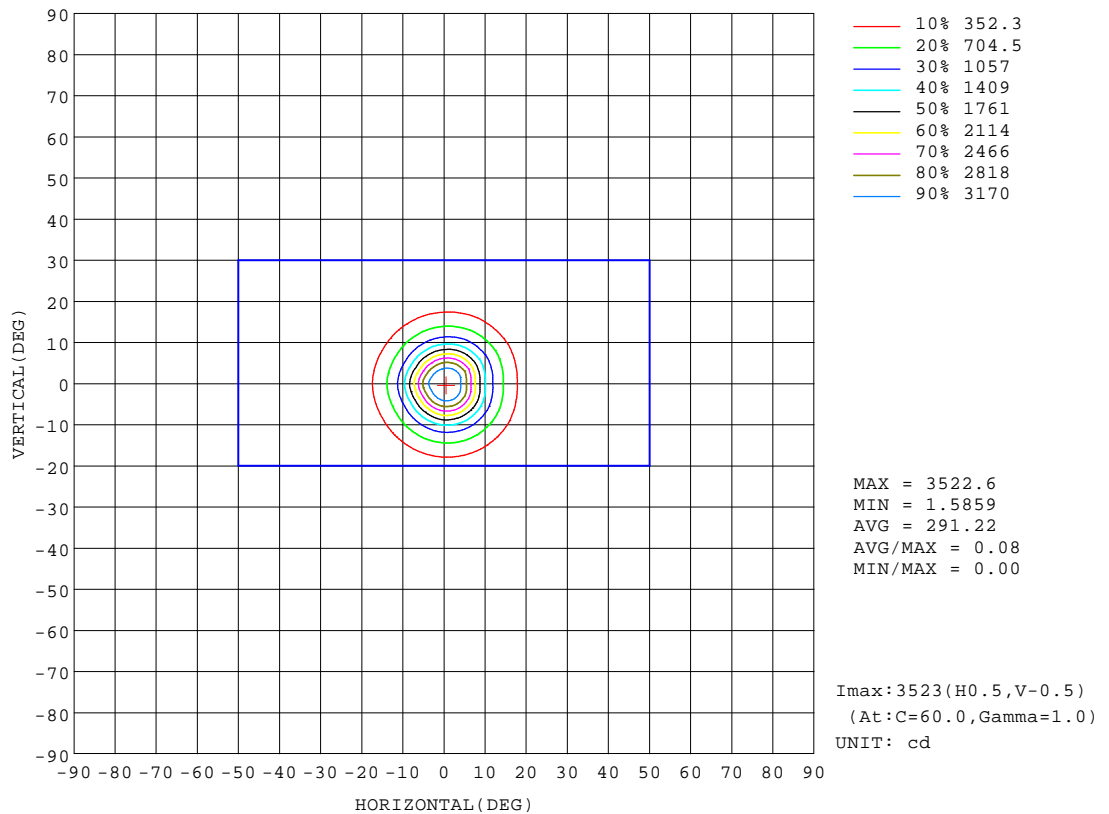
REFLECTANCE										
Ceiling	0.8	0.8	0.8	0.7	0.7	0.7	0.5	0.5	0.5	0
Walls	0.7	0.5	0.3	0.7	0.5	0.3	0.7	0.5	0.3	0
Working plane	0.2	0.2	0.2	0.2	0.2	0.2	0.2	0.2	0.2	0
ROOM INDEX	UTILIZATION FACTORS(PERCENT) $k(RI) \times RCR = 5$									
k = 0.60	44	41	40	44	41	39	43	41	39	38
0.80	47	45	43	47	45	43	46	44	43	41
1.00	49	47	45	49	47	45	48	46	45	43
1.25	51	49	47	50	48	47	50	48	47	45
1.50	52	50	49	52	50	48	50	49	48	46
2.00	53	51	50	52	51	50	51	50	49	46
2.50	54	52	51	53	52	50	52	50	50	47
3.00	55	53	52	54	52	51	52	51	50	47
4.00	55	54	53	54	53	53	53	52	51	48
5.00	56	55	54	55	54	53	53	53	52	48
ROOM INDEX	UF(total)									Direct
According to DIN EN 13032-2 2004			Suspended					SHRNOM = 1.25		

C Range: 0 - 360DEG
C Interval: 30.0DEG
Test Speed: HIGH
Temperature:25.3℃
Operators:zoe
Test Date:2023-12-7

Range: 0 - 180DEG
Interval: 1.0DEG
Test System:EVERFINE GO-SPEX500_V1 SYSTEM V2.00.461
Humidity:65.0%
Test Distance:3.160m [K=1.0000]
Remarks: LAMP:CMA1306-0000-000N0U0A30G Ra:90
LENS:PM-1084 15R
DRIVER:PUP10A-1WMC-350 260mA
30minutes warm-up

ISOCANDELA DIAGRAM

Test:U:120.17V I:0.1014A P:12.081W PF:0.9895 Freq:59.98Hz Lamp Flux:959.178x1 lm		
NAME: 2318.116-LEA-13	TYPE:	WEIGHT:
SPEC.: 3000K	DIM.:	SERIAL No.: 2312071428
MFR.: RISE	SUR.: 0.00180864m2	Shielding Angle:

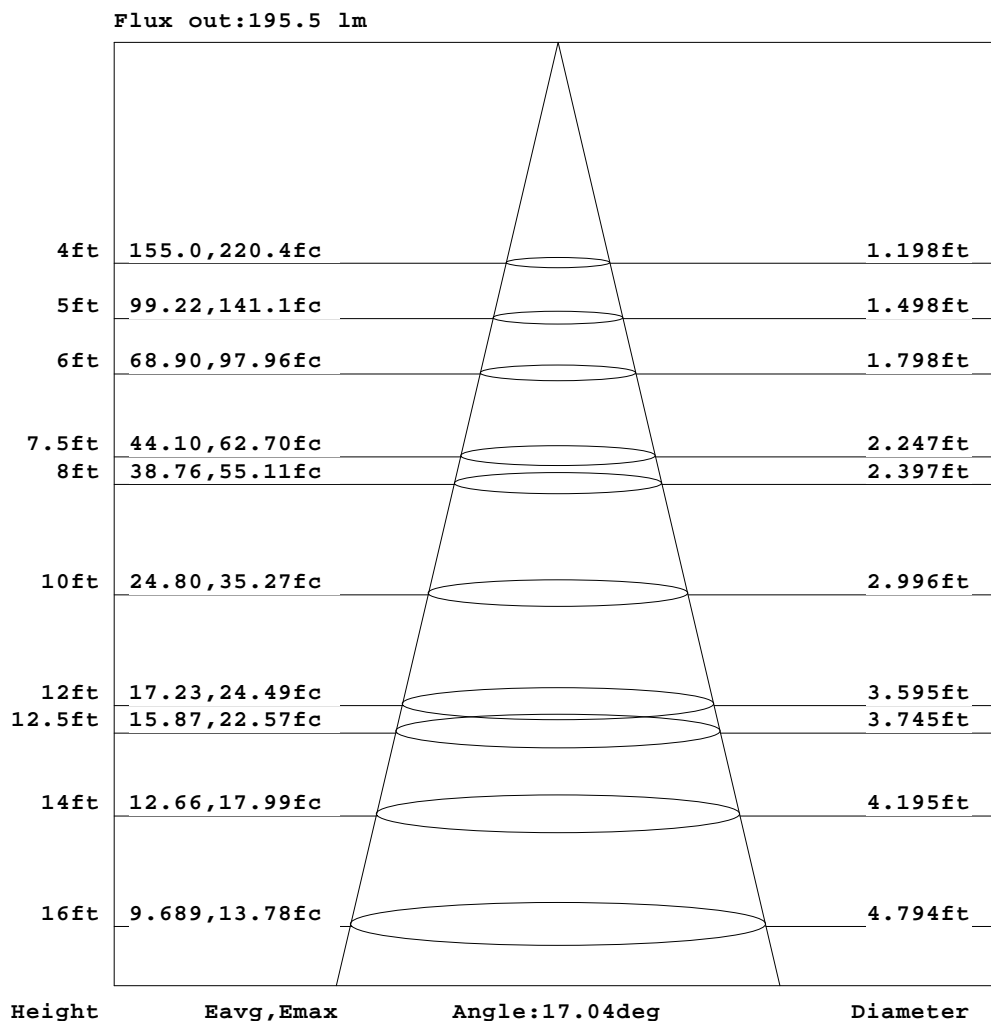


C Range: 0 - 360DEG
C Interval: 30.0DEG
Test Speed: HIGH
Temperature: 25.3 °C
Operators: zoe
Test Date: 2023-12-7

Range: 0 - 180DEG
Interval: 1.0DEG
Test System: EVERFINE GO-SPEX500_V1 SYSTEM V2.00.461
Humidity: 65.0%
Test Distance: 3.160m [K=1.0000]
Remarks: LAMP: CMA1306-0000-000N0U0A30G Ra: 90
LENS: PM-1084 15R
DRIVER: PUP10A-1WMC-350 260mA
30minutes warm-up

AAI Figure

Test:U:120.17V I:0.1014A P:12.081W PF:0.9895 Freq:59.98Hz Lamp Flux:959.178x1 lm		
NAME: 2318.116-LEA-13	TYPE:	WEIGHT:
SPEC.: 3000K	DIM.:	SERIAL No.: 2312071428
MFR.: RISE	SUR.: 0.00180864m2	Shielding Angle:



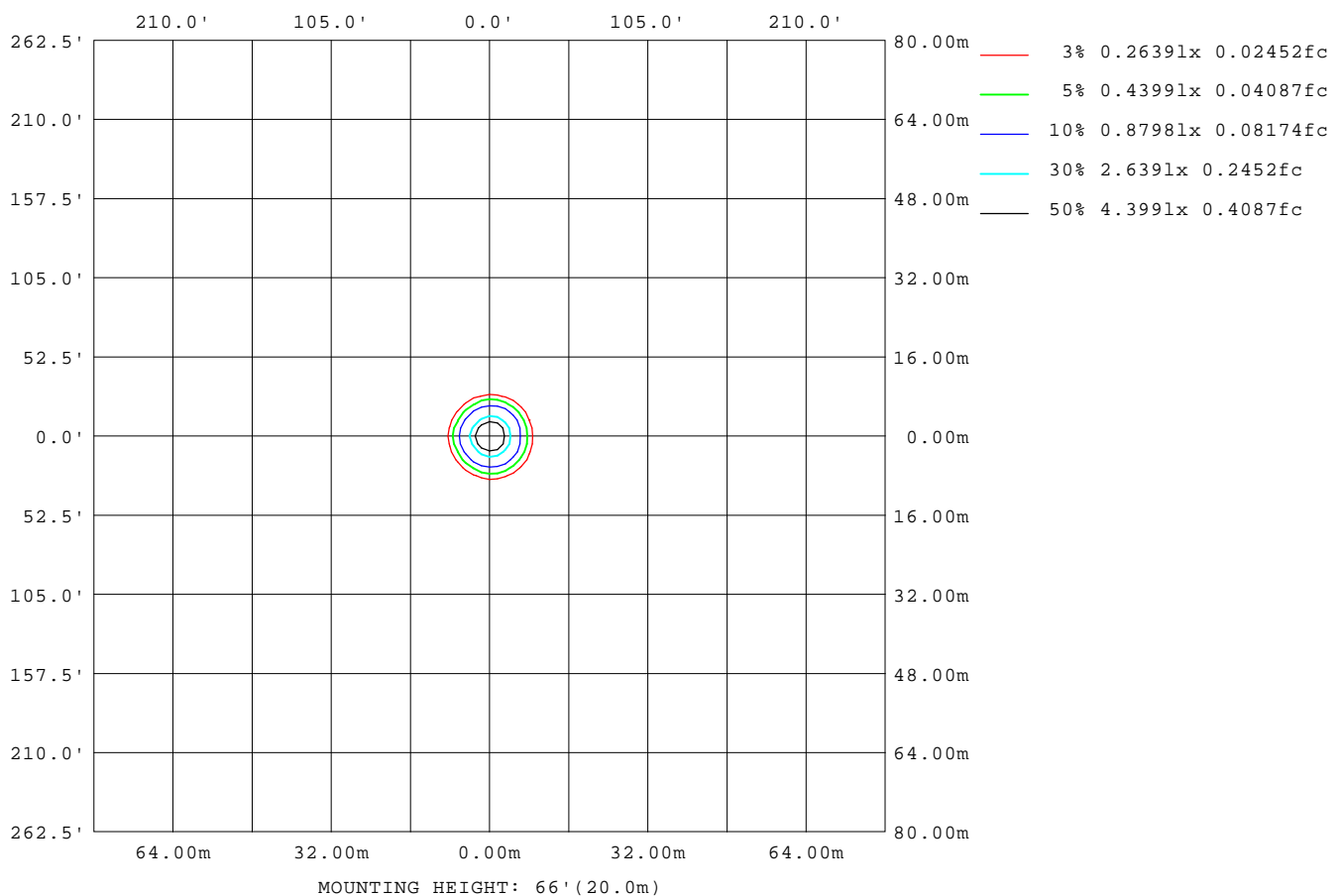
Note:The Curves indicate the illuminated area and the average illumination when the luminaire is at different distance.

C Range: 0 - 360DEG
C Interval: 30.0DEG
Test Speed: HIGH
Temperature:25.3℃
Operators:zoe
Test Date:2023-12-7

Range: 0 - 180DEG
Interval: 1.0DEG
Test System:EVERFINE GO-SPEX500_V1 SYSTEM V2.00.461
Humidity:65.0%
Test Distance:3.160m [K=1.0000]
Remarks: LAMP:CMA1306-0000-000N0U0A30G Ra:90
LENS:PM-1084 15R
DRIVER:PUP10A-1WMC-350 260mA
30minutes warm-up

ISOLUX DIAGRAM

Test:U:120.17V I:0.1014A P:12.081W PF:0.9895 Freq:59.98Hz Lamp Flux:959.178x1 lm		
NAME: 2318.116-LEA-13	TYPE:	WEIGHT:
SPEC.: 3000K	DIM.:	SERIAL No.: 2312071428
MFR.: RISE	SUR.: 0.00180864m2	Shielding Angle:



C Range: 0 - 360DEG
C Interval: 30.0DEG
Test Speed: HIGH
Temperature:25.3°C
Operators:zoe
Test Date:2023-12-7

Range: 0 - 180DEG
Interval: 1.0DEG
Test System:EVERFINE GO-SPEX500_V1 SYSTEM V2.00.461
Humidity:65.0%
Test Distance:3.160m [K=1.0000]
Remarks: LAMP:CMA1306-0000-000N0U0A30G Ra:90
LENS:PM-1084 15R
DRIVER:PUP10A-1WMC-350 260mA
30minutes warm-up

LED Avg.L Report

Test:U:120.17V I:0.1014A P:12.081W PF:0.9895 Freq:59.98Hz Lamp Flux:959.178x1 lm		
NAME: 2318.116-LEA-13	TYPE:	WEIGHT:
SPEC.: 3000K	DIM.:	SERIAL No.: 2312071428
MFR.: RISE	SUR.: 0.00180864m2	Shielding Angle:

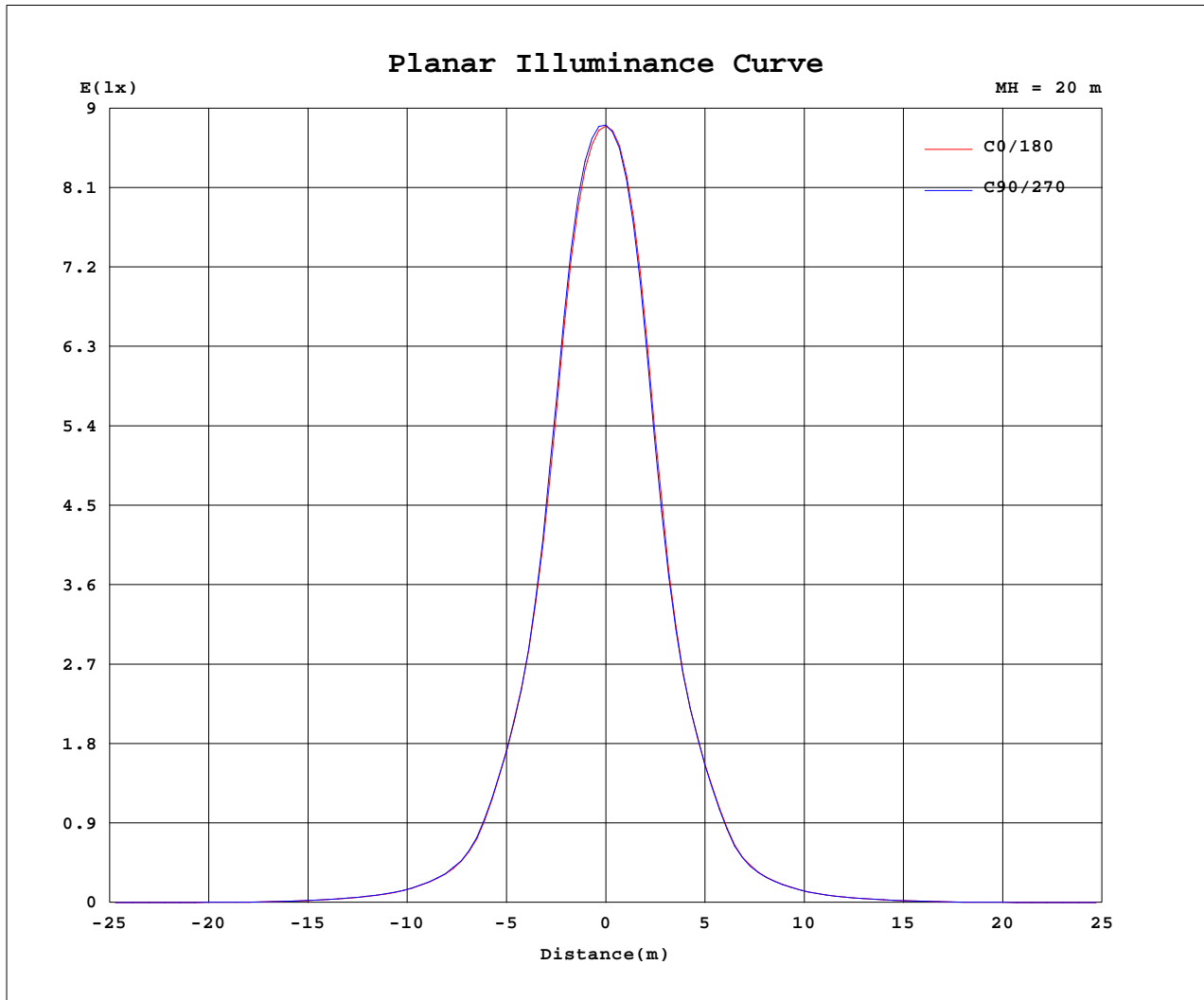
AvgL	cd/m2
L_0~180(65)av	604
L_0~180(75)av	153
L_0~180(85)av	148
L_90~270(65)av	587
L_90~270(75)av	147
L_90~270(85)av	112
L_45(65)av	596
L_45(75)av	136
L_45(85)av	73

Standard: GB/T 29293-2012

C Range: 0 - 360DEG
C Interval: 30.0DEG
Test Speed: HIGH
Temperature:25.3℃
Operators:zoe
Test Date:2023-12-7

Range: 0 - 180DEG
Interval: 1.0DEG
Test System:EVERFINE GO-SPEX500_V1 SYSTEM V2.00.461
Humidity:65.0%
Test Distance:3.160m [K=1.0000]
Remarks: LAMP:CMA1306-0000-000N0U0A30G Ra:90
LENS:PM-1084 15R
DRIVER:PUP10A-1WMC-350 260mA
30minutes warm-up

Planar Illuminance Curve



C Range: 0 - 360DEG
 C Interval: 30.0DEG
 Test Speed: HIGH
 Temperature: 25.3 °C
 Operators: zoe
 Test Date: 2023-12-7

Range: 0 - 180DEG
 Interval: 1.0DEG
 Test System: EVERFINE GO-SPEX500_V1 SYSTEM V2.00.461
 Humidity: 65.0%
 Test Distance: 3.160m [K=1.0000]
 Remarks: LAMP: CMA1306-0000-000N0U0A30G Ra:90
 LENS: PM-1084 15R
 DRIVER: PUP10A-1WMC-350 260mA
 30minutes warm-up

LUMINOUS DISTRIBUTION INTENSITY DATA

Test:U:120.17V I:0.1014A P:12.081W PF:0.9895 Freq:59.98Hz Lamp Flux:959.178x1 lm		
NAME: 2318.116-LEA-13	TYPE:	WEIGHT:
SPEC.: 3000K	DIM.:	SERIAL No.: 2312071428
MFR.: RISE	SUR.: 0.00180864m2	Shielding Angle:

Table--1

UNIT: cd

C(DEG) (DEG)	0	30	60	90	120	150	180	210	240	270	300	330						
0	3523	3523	3523	3523	3523	3523	3523	3523	3523	3523	3523	3523						
5	2949	3063	3067	2991	2876	2787	2888	2750	2747	2837	2963	3051						
10	1421	1538	1520	1437	1316	1244	1316	1208	1227	1296	1428	1515						
15	638	692	679	641	587	553	583	533	539	576	643	682						
20	227	253	247	230	205	196	207	185	186	199	229	239						
25	106	118	116	107	95.9	90.4	94.4	88.8	88.6	92.7	102	107						
30	51.1	56.7	56.8	52.7	47.9	44.9	46.1	43.1	43.5	46.0	50.2	52.3						
35	25.1	28.2	28.3	26.4	24.3	22.7	23.4	21.8	22.0	23.5	25.7	26.5						
40	9.76	11.1	11.0	10.3	9.69	9.05	9.68	9.24	9.05	9.86	10.7	11.0						
45	4.29	4.39	4.30	4.20	4.13	3.97	4.12	4.05	3.98	4.09	4.38	4.49						
50	2.92	3.00	2.90	2.81	2.82	2.74	2.80	2.76	2.69	2.74	2.92	3.00						
55	1.88	1.99	1.93	1.87	1.84	1.77	1.87	1.84	1.76	1.75	1.92	2.02						
60	0.77	0.83	0.82	0.80	0.82	0.82	0.86	0.83	0.81	0.81	0.81	0.80						
65	0.42	0.45	0.45	0.44	0.45	0.46	0.50	0.49	0.47	0.46	0.45	0.44						
70	0.19	0.20	0.20	0.20	0.20	0.20	0.23	0.22	0.22	0.20	0.19	0.19						
75	0.07	0.06	0.07	0.07	0.06	0.06	0.08	0.07	0.07	0.07	0.06	0.06						
80	0.04	0.02	0.03	0.03	0.02	0.02	0.03	0.02	0.02	0.03	0.02	0.02						
85	0.02	0.01	0.02	0.02	0.01	0.01	0.02	0.01	0.01	0.02	0.01	0.01						
90	0.00	0.00	0.00	0.00	0.00	0.00	0.00	0.00	0.00	0.00	0.00	0.00						
95	0.00	0.00	0.00	0.00	0.00	0.00	0.00	0.00	0.00	0.00	0.00	0.00						
100	0.00	0.00	0.00	0.00	0.00	0.00	0.00	0.00	0.00	0.00	0.00	0.00						
105	0.00	0.00	0.00	0.00	0.00	0.00	0.00	0.00	0.00	0.00	0.00	0.00						
110	0.00	0.00	0.00	0.00	0.00	0.00	0.00	0.00	0.00	0.00	0.00	0.00						
115	0.00	0.00	0.00	0.00	0.00	0.00	0.00	0.00	0.00	0.00	0.00	0.00						
120	0.00	0.00	0.00	0.00	0.00	0.00	0.00	0.00	0.00	0.00	0.00	0.00						
125	0.00	0.00	0.00	0.00	0.00	0.00	0.00	0.00	0.00	0.00	0.00	0.00						
130	0.00	0.00	0.00	0.00	0.00	0.00	0.00	0.00	0.00	0.00	0.00	0.00						
135	0.00	0.00	0.00	0.00	0.00	0.00	0.00	0.00	0.00	0.00	0.00	0.00						
140	0.00	0.00	0.00	0.00	0.00	0.00	0.00	0.00	0.00	0.00	0.00	0.00						
145	0.00	0.00	0.00	0.00	0.00	0.00	0.00	0.00	0.00	0.00	0.00	0.00						
150	0.00	0.00	0.00	0.00	0.00	0.00	0.00	0.00	0.00	0.00	0.00	0.00						
155	0.00	0.00	0.00	0.00	0.00	0.00	0.00	0.00	0.00	0.00	0.00	0.00						
160	0.00	0.00	0.00	0.00	0.00	0.00	0.00	0.00	0.00	0.00	0.00	0.00						
165	0.00	0.00	0.00	0.00	0.00	0.00	0.00	0.00	0.00	0.00	0.00	0.00						
170	0.00	0.00	0.00	0.00	0.00	0.00	0.00	0.00	0.00	0.00	0.00	0.00						
175	0.00	0.00	0.00	0.00	0.00	0.00	0.00	0.00	0.00	0.00	0.00	0.00						
180	0.00	0.00	0.00	0.00	0.00	0.00	0.00	0.00	0.00	0.00	0.00	0.00						

C Range: 0 - 360DEG
C Interval: 30.0DEG
Test Speed: HIGH
Temperature:25.3℃
Operators:zoe
Test Date:2023-12-7

Range: 0 - 180DEG
Interval: 1.0DEG
Test System:EVERFINE GO-SPEX500_V1 SYSTEM V2.00.461
Humidity:65.0%
Test Distance:3.160m [K=1.0000]
Remarks: LAMP:CMA1306-0000-000N0U0A30G Ra:90
LENS:PM-1084 15R
DRIVER:PUP10A-1WMC-350 260mA
30minutes warm-up